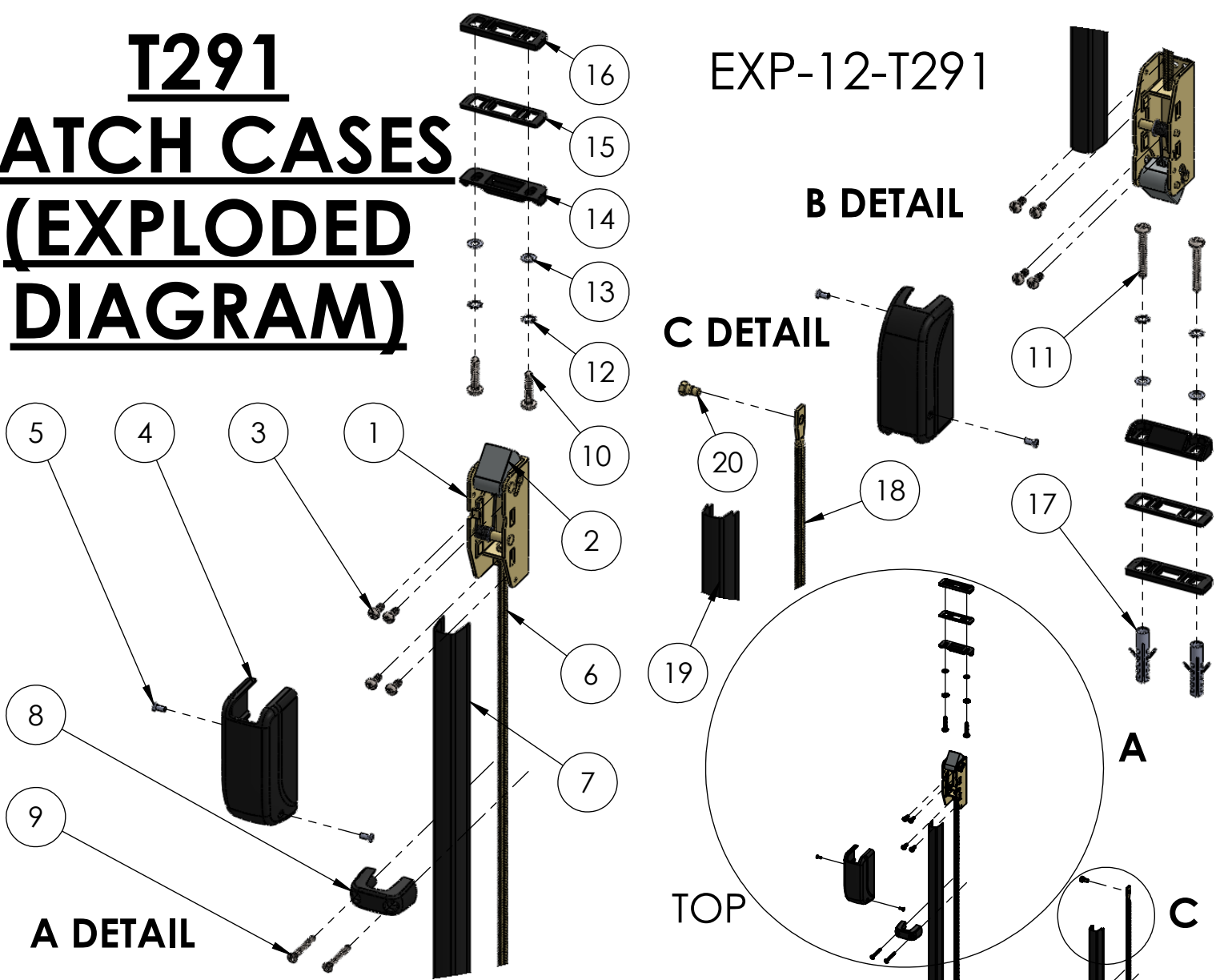


T291

LATCH CASES (EXPLODED DIAGRAM)

EXP-12-T291



20	FIXING ROD WITH CENTRAL MECHANISM SCREW	SAE 12L14 STEEL	YELLOW ZINC PLATED	2
19	BOTTOM ROD GUARD	SAE 1010 METAL SHEET	ELECTROSTATIC PAINTING	1
18	BOTTOM ROD	COMMERCIAL W1/4" THREADED ROD	YELLOW ZINC PLATED	1
17	PLASTIC DOWEL PIN	COMMERCIAL 5/16" (8mm)	NATURAL	2
16	SUPLEMMENT 5/32" (4 mm)	NYLON 6.6	NATURAL (BLACK OR GRAY)	2
15	SUPLEMMENT 5/64" (2 mm)	NYLON 6.6	NATURAL (BLACK OR GRAY)	2
14	STRIKE	NYLON 6.6	NATURAL (BLACK OR GRAY)	2
13	STRIKE FLAT WASHER	COMMERCIAL I.D.=5.3mm / O.D.=10.0mm / Thk.=0.8mm	YELLOW ZINC PLATED	4
14	STRIKE STAR-SHAPED WASHER	COMMERCIAL I.D.=5.3mm / O.D.=10.0mm / Thk.=0.6mm	YELLOW ZINC PLATED	4
11	FIXING BOTTOM STRIKE WITH FLOOR SCREW	COMMERCIAL PARKER #10 x 1-1/2"	BLUE ZINC PLATED	2
10	FIXING TOP STRIKE WITH DOOR FRAME SCREW	COMMERCIAL PARKER #10 x 1"	BLUE ZINC PLATED	2
9	FIXING GUARD SUPPORT WITH DOOR SCREW	COMMERCIAL PARKER #6 x 1-1/4"	BLUE ZINC PLATED	4
8	GUARD SUPPORT	NYLON 6.6	NATURAL (BLACK OR GRAY)	2
7	TOP ROD GUARD	SAE 1010 METAL SHEET	ELECTROSTATIC PAINTING	1
6	TOP ROD	COMMERCIAL W1/4" THREADED ROD	YELLOW ZINC PLATED	1
5	LATCH CASE CAP FIXING SCREW	COMMERCIAL COUNTERSUNK HEAD M3 x 8	BLUE ZINC PLATED	4
4	LATCH CASE CAP	ZAMAK 5	ELECTROSTATIC PAINTING	2
3	FIXING LATCH CASE WITH DOOR SCREW	COMMERCIAL PARKER #8 x 1/2"	BLUE ZINC PLATED	8
2	LATCH BOLT	ZAMAK 5	BLUE ZINC PLATED	2
1	LATCH CASE	SAE 1010 METAL SHEET	YELLOW ZINC PLATED	2
No.	PART. NAME	MATERIAL	FINISH	QTY

BILL OF MATERIAL (BOM)

BOTTOM