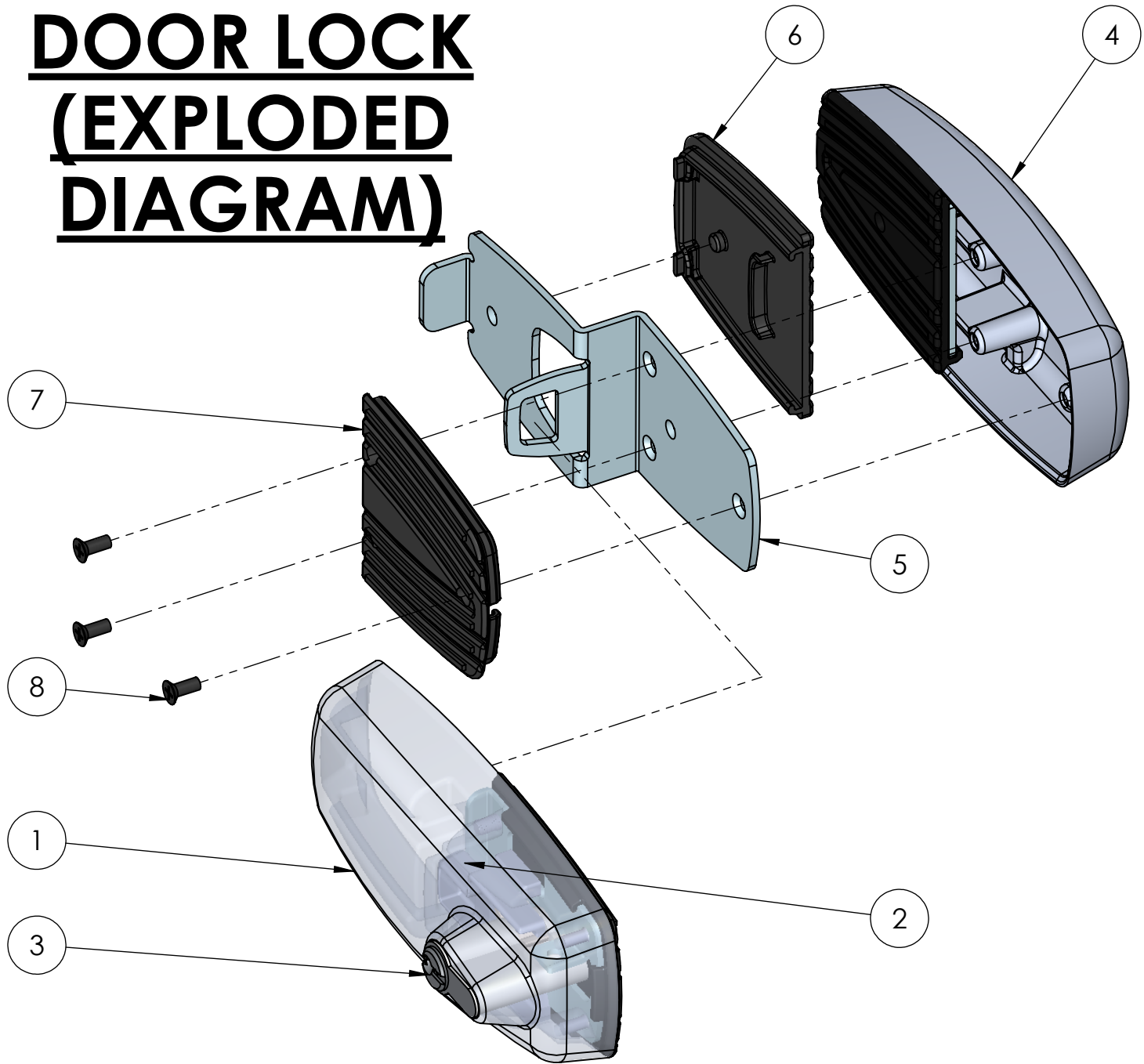


T180

EXP-21-T210

TEMPERED GLASS DOOR LOCK (EXPLODED DIAGRAM)



8	FIXING "Z" SHEET WITH REAR LOCK PART	COMMERCIAL COUNTERSUNK HEAD M4 x 10	BLACK BLUED	3
7	REAR LOCK PART RUBBER [FOR GLASS THK = 3/8" (10mm) & 1/2" (12mm)]	SANTOPRENE	NATURAL (BLACK)	1+1
6	"Z" SHEET RUBBER [FOR GLASS THK = 3/8" (10mm) & 1/2" (12mm)]	SANTOPRENE	NATURAL (BLACK)	1+1
5	"Z" SHEET	SAE 1010 METAL SHEET	BLUE ZINC PLATED	1
4	REAR LOCK PART	ALUMINUM CASTING	ELECTROSTATIC PAINTING	1
3	EURO CYLINDER LOCK MULTIPOINT KEYWAY	COMMERCIAL	NICKEL PLATED	1
2	LATCH	ZAMAK 5	BLUE ZINC PLATED	1
1	FRONT LOCK PART	ALUMINUM CASTING	ELECTROSTATIC PAINTING	1
No.	PART. NAME	MATERIAL	FINISH	QTY

BILL OF MATERIAL (BOM)